

# St. Vincent de Paul Society of Lane County

*Using the waste stream to solve  
material and human problems in  
our community*

[www.svdp.us](http://www.svdp.us)



St. Vincent de Paul Society of Lane County

# Social Enterprises: What are the benefits?

- Healthier Environment: 37 Million Pounds of Materials diverted from the waste stream in 2019. Diversion Rates by Material:
  - Scrap Metal: 12.6 million lbs
  - Textiles: 7.9 million lbs
  - Shoes/Belts/Purses: 742,000 lbs
  - Books/Paper/Cardboard: 3.1 million lbs
  - Wood: 5.9 million lbs
  - Plastic/Polyurethane: 4.1 million lbs
  - Corporate Retail Waste: 1.3 million lbs
- Job Creation: Over 650 people employed
- Revenue Generation funds human services- 60% of our annual \$50 million budget is from earned income



# 15 Retail Thrift Stores



St. Vincent de Paul Society of Lane County

# Appliance Program and CFC Recovery

## Retail Appliance Sales





# Online & Retail Book Departments





# Over 400,000 Mattresses Recycled in 2019





# Upcycling: ENVIA Fashion

ENVIA is a brand of SVDP, created to upcycle waste diverted from our waste stream into fashion products.



# Dogma Pet Beds

We use cast-off textiles and post-industrial materials to create Dogma brand pet beds.



St. Vincent de Paul Society of Lane County

# Commodity Sales

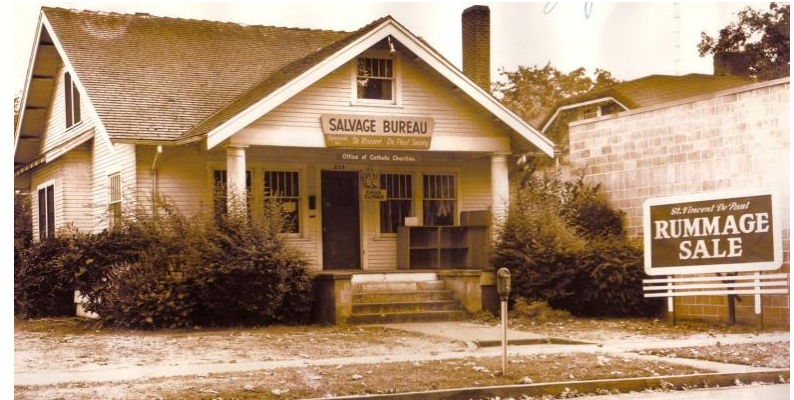


# Styrofoam Recycling





# Beginnings of St. Vincent de Paul in Lane County



- Founded in 1954
- Started with a rummage store in a church basement that funded a small social service office
- Today we are Lane County's largest nonprofit human services organization



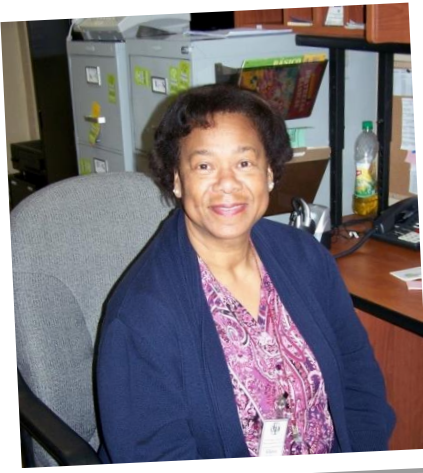


# Emergency Services

- Food boxes for the hungry
- Vouchers for clothing and essential goods
- Rent, utility, prescription assistance







# Self-Sufficiency Services

- Helps people with barriers to employment find work
- Second Chance Renter's Rehabilitation: helps people with poor rental history establish housing
- Veterans in Progress: helps homeless veterans through employment and training





# Homeless Services

- Eugene Service Station provides day shelter, food, showers, clothing, laundry.
- First Place Family Center helps homeless families with children.
- Overnight Parking Program: provides legal camping for homeless people living in their vehicles.
- Egan Warming Center





# Dusk to Dawn

- The Dusk to Dawn program provides safe overnight shelter for up to 256 individuals.
- Through a new partnership with Willamette Family Treatment, we are able to offer healthcare: free drug and alcohol treatment as well as urgent care are provided on-site.





# Affordable Housing

- Provides housing for seniors, families, veterans, and individuals in over 1,400 units across Oregon
- Veterans housing, transitional housing, Senior housing
- Programs to help provide education and access to social services





# Affordable Housing



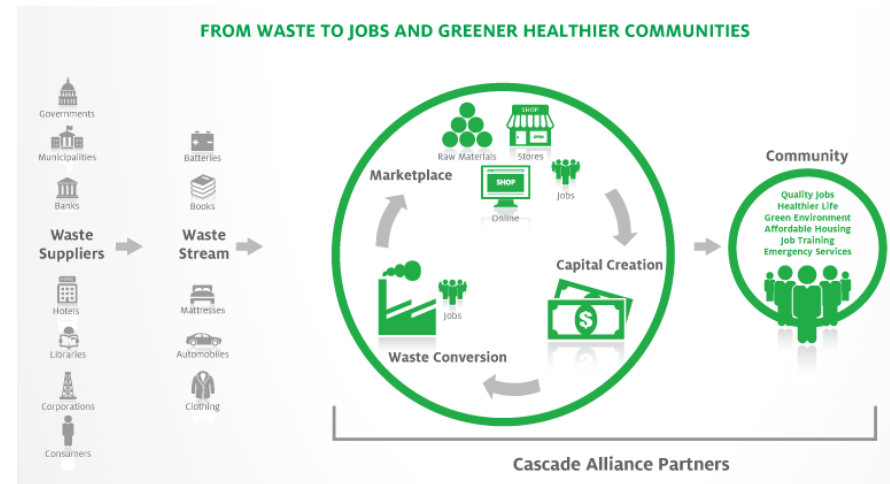
- Resident Services provides info & referral, educational, recreational, and community building services for tenants
- VIDA (Valley Individual Development Account): helps households achieve major life & financial goals through matched savings, training, and support.
- Vet LIFT: provides assistance to homeless veterans who are dually diagnosed with substance abuse and mental health issues.



# Now we're helping others build similar businesses

## • Our network so far:

- Greater Bridgeport Community Enterprises, Bridgeport, CT
- United Teen Equality Center (UTEC), Lowell, MA
- Opportunity House, Reading PA
- Scrap Exchange, Durham, NC
- The Atlanta Furniture Bank, Atlanta, GA
- The Mustard Seed, Orlando, FL
- Clever Octopus, Salt Lake City, UT
- Indigo Hippo, Cincinnati, OH
- Total Action for Progress, Roanoke, VA
- Union Rescue Mission, Wichita, KS
- Big Reuse, Brooklyn, NY
- Finger Lakes Reuse, Ithaca, NY
- St. Vincent de Paul of Dayton, OH
- DR3 North, Woodland, CA







# CONNECT WITH US



[www.svdp.us](http://www.svdp.us)

terry.mcdonald@svdp.us



St. Vincent de Paul Society of Lane County