

2025

Day 2

8:30 AM
Oct 23

PLENARY 1

Municipalities Leading Toward Zero Waste

Moderator: Ruth Abbe

Elizabeth Ellman

Speakers: Sarah Hofman-Graham
Leigh Ratterman



NATIONAL
ZERO
WASTE
CONFERENCE





City of Bexley

MUNICIPALITIES LEADING TOWARDS ZERO WASTE: BEXLEY, OHIO

Elizabeth Ellman

Sustainability Programs Coordinator for the City of Bexley, Ohio







Chicago

Detroit

Toledo

Cleveland

Indianapolis

Columbus

Pittsburgh

Cincinnati

Louisville

Sustainability Programs

Administrative

- CDP reporting
- resource to other cities
- greenhouse gas inventory
- *Sustainability Action Plan*

Air

- Air quality monitoring (supplemental to MORPC)
- EV chargers
- Electric Lawnmower Entrepreneurial Program
- Gas vehicle purchasing moratorium
- Idle Free Bexley campaign
- *Charging Smart designation*

Built Enviro.

- Alley of the Future
- Arboretum
- Bike boulevards
- Bike Friendly Bexley plan
- Building upgrades
- Infrastructure developments
- Love Your Alley
- Riparian setback requirements
- SolSmart designation

Energy

- Aggregation program
- Events powered by Lightning trucks
- Solar systems on municipal buildings

Public Health

- Bexley Farmers Market
- community gardens
- mosquito pilot program

Teach/Outreach

- education program for BCS 1st, 4th, and 6th graders
- Green Bexley/ESAC
- Repair Cafe
- *Earth & Arbor Days Celebration*
- *Ecochallenges*

Waste

- Curbside Food Waste Recycling program
- event waste management
- Green Bexley Cleanup Day
- Food Council
- litter pick ups
- Single Use Plastics ban
- special recycling collections

- The Bexley Freedge
- Universal Recycling
- We Wash the Dishes
- weekly trash, recycling, and yard waste collection
- Yardsale & Freecycle Day
- Zero Waste Plan

Sustainability Programs

Administrative

- CDP reporting
- resource to other cities
- greenhouse gas inventory
- *Sustainability Action Plan*

Air

- Air quality monitoring (supplemental to MORPC)
- EV chargers
- Electric Lawnmower Entrepreneurial Program
- Gas vehicle purchasing moratorium
- Idle Free Bexley campaign
- *Charging Smart designation*

Built Enviro.

- Alley of the Future
- Arboretum
- Bike boulevards
- Bike Friendly Bexley plan
- Building upgrades
- Infrastructure developments
- Love Your Alley
- Riparian setback requirements
- SolSmart designation

Energy

- Aggregation program
- Events powered by Lightning trucks
- Solar systems on municipal buildings

Public Health

- Bexley Farmers Market
- community gardens
- mosquito pilot program

Teach/Outreach

- education program for BCS 1st, 4th, and 6th graders
- Green Bexley/ESAC
- Repair Cafe
- *Earth & Arbor Days Celebration*
- *Ecochallenges*

Waste

- **Curbside Food Waste Recycling program**
- event waste management
- Green Bexley Cleanup Day
- Food Council
- litter pick ups
- Single Use Plastics ban
- special recycling collections

- The Bexley Freedge
- **Universal Recycling**
- **We Wash the Dishes**
- weekly trash, recycling, and yard waste collection
- Yardsale & Freecycle Day
- Zero Waste Plan



OBVIOUS BUCKEYES

OBVIOUS BUCKEYES

OBVIOUS BUCKEYES

OBVIOUS BUCKEYES

OBVIOUS BUCKEYES

OBVIOUS BUCKEYES

OBVIOUS BUCKEYES

OBVIOUS BUCKEYES

OBVIOUS BUCKEYES



and includes the

City of Bexley

ZERO WASTE PLAN

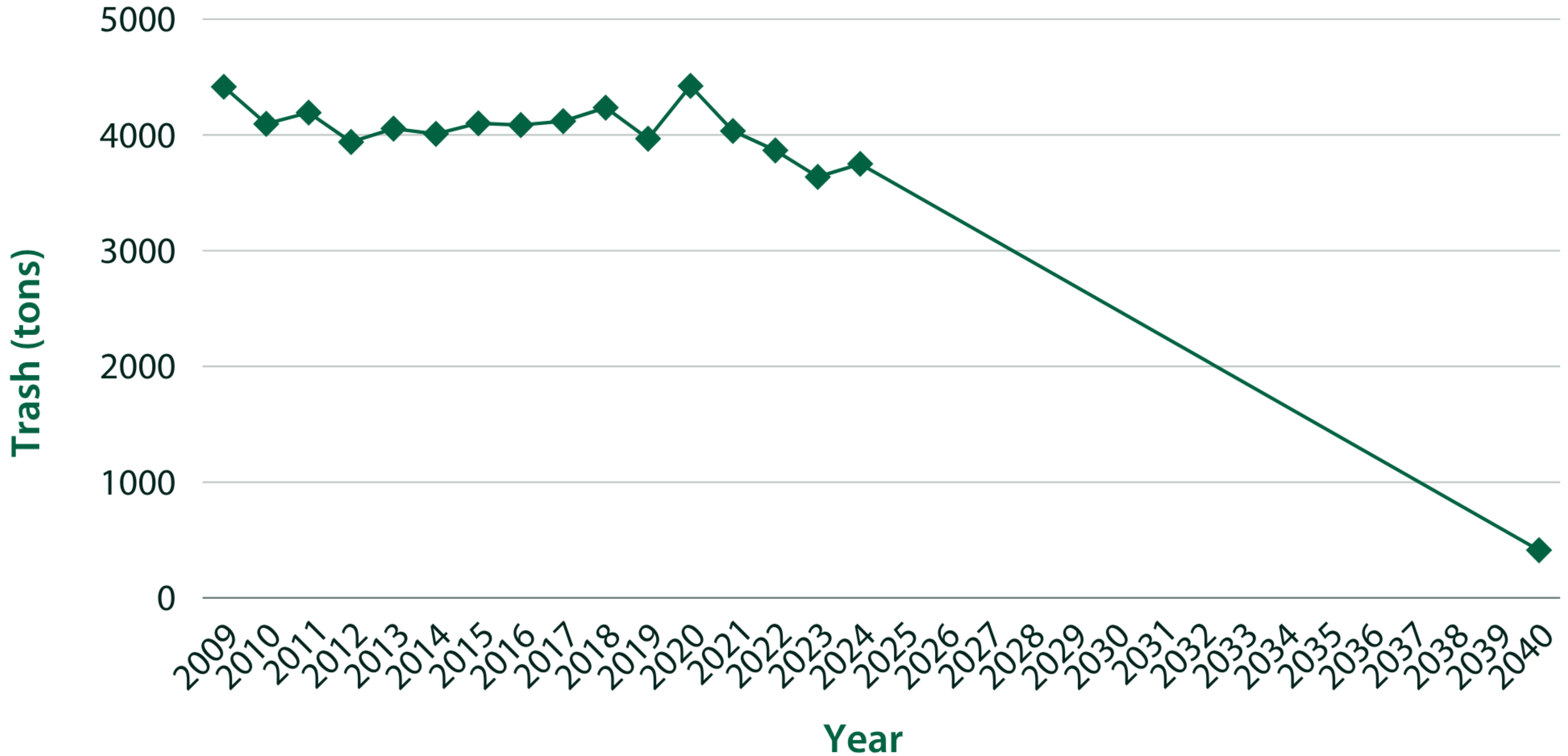


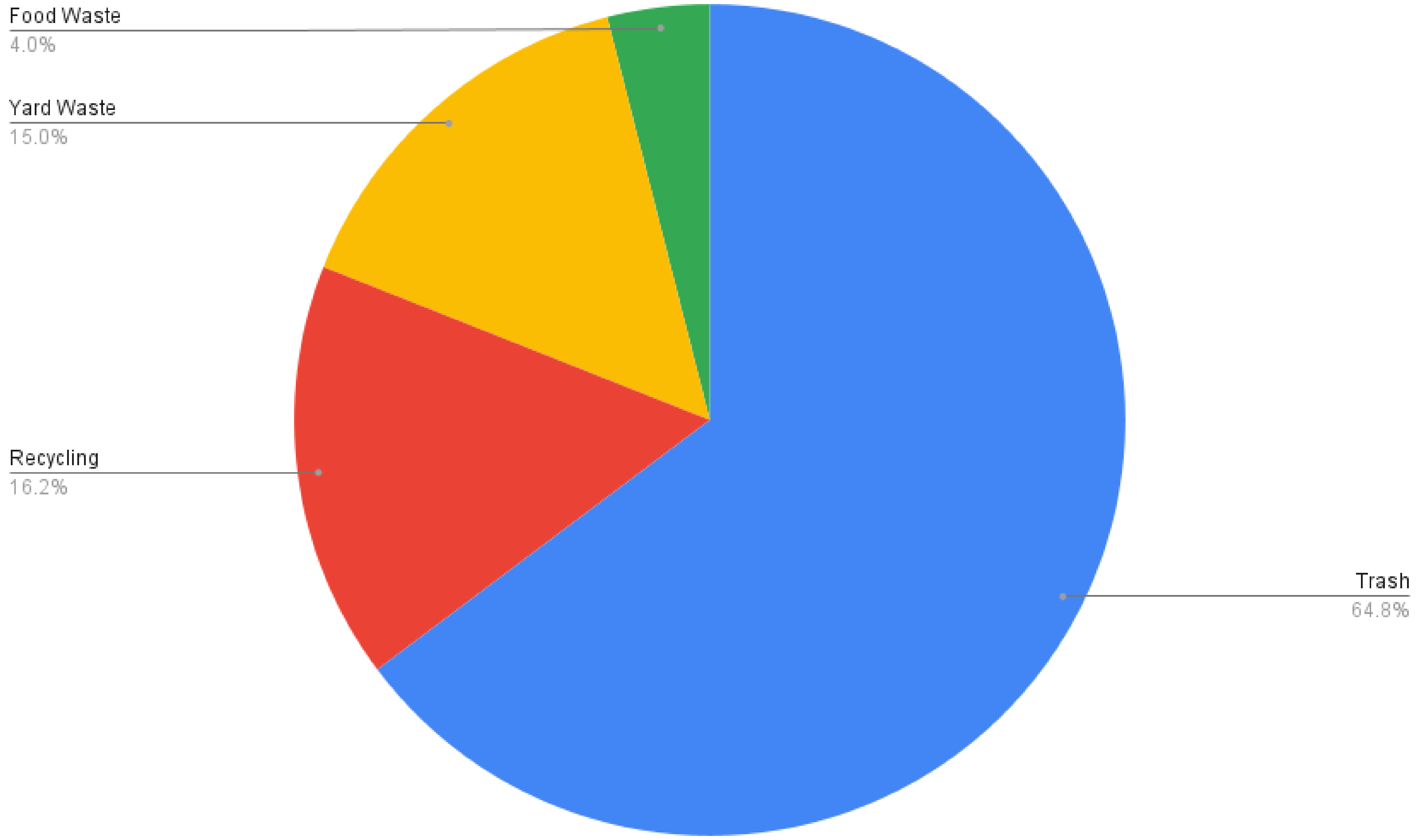
and includes the

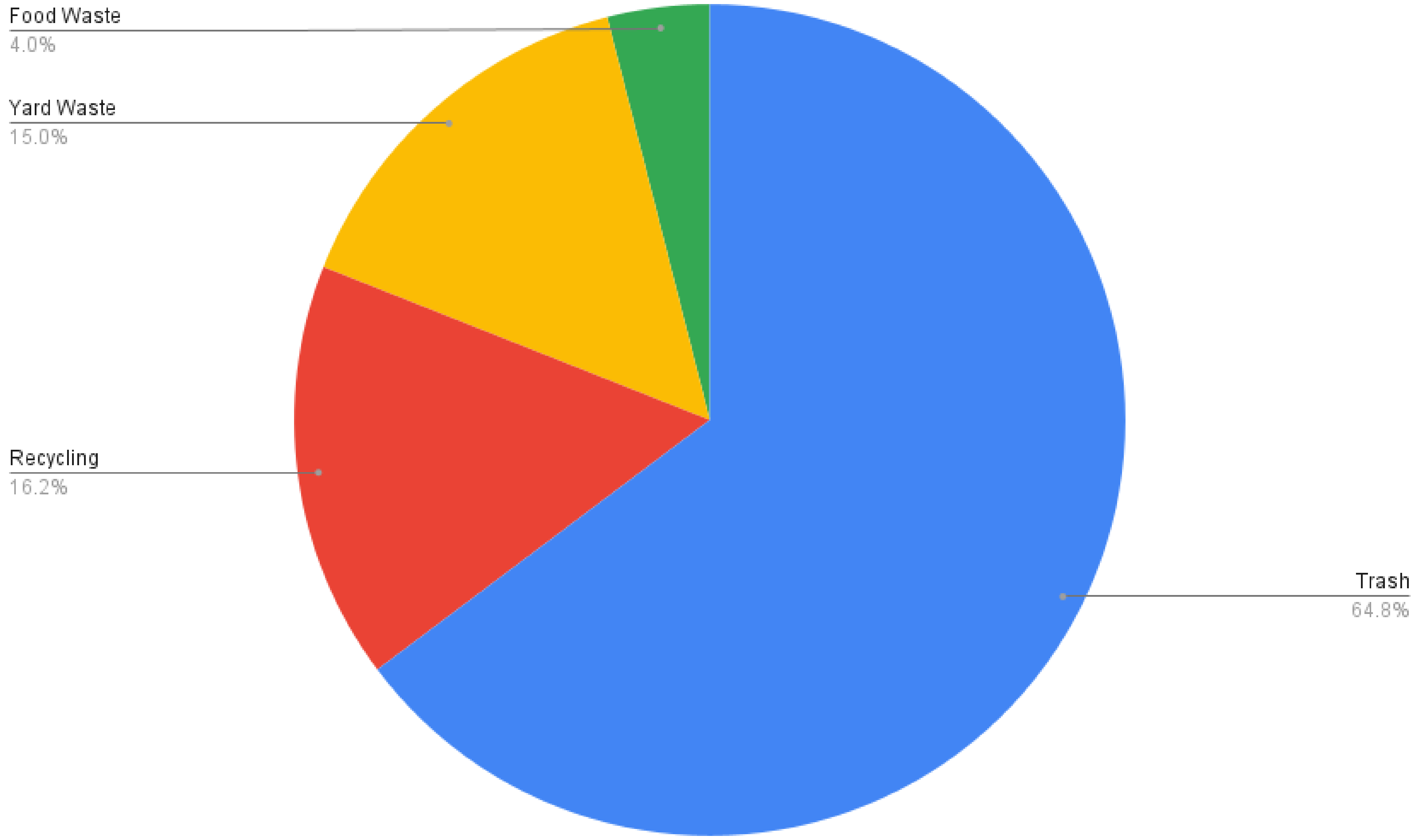
City of Bexley

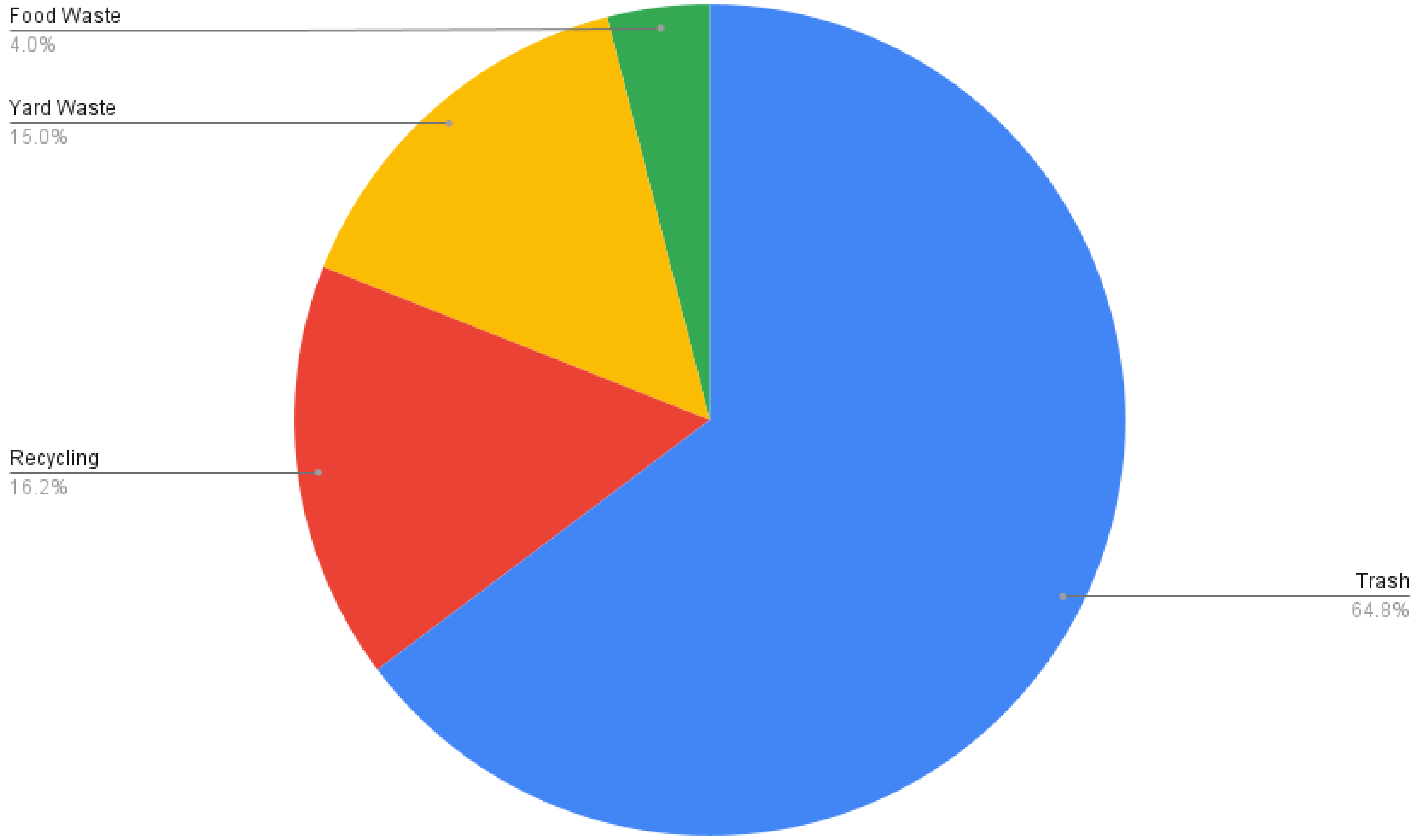
ZERO WASTE PLAN

BEXLEY HOUSEHOLD TRASH SENT TO LANDFILL









OSTA3L
re-Bag
turbag.com
TUV

WARNING
AVISO
RECYCLING



BEXLEY
Food Waste Recycling Pilot Program
www.bexley.org/food-waste



ASTE

**FOOD WASTE
ONLY**

FOO

AK
15

819



**EARTHPEAK
SOLUTIONS**

U2 193961

EARTH
SOL

U2 T

ASTE

**FOOD WASTE
ONLY**

FOO

AK
15

819



**EARTHPEAK
SOLUTIONS**

U2 193961

EARTH
SOL

U2 1

ESTABLISHING NEXT STEPS

Next Meeting
August 19, 5:00-6:00

Additional Topics, Contacts, and Ideas
Please email eellman@bexley.org.





BEXLEY

FREEDGE

If you see a sign -
Please Do Not
Pick It





THE BEXLEY
FREEZER

REFRIGERATOR

USE WHAT YOU CAN
DONATE

THE BEXLEY
FREEZER

This Project Was Funded By
BEXLEY
community foundation

This Project Was Funded By
BEXLEY
community foundation

Order with

Uber
EATS

INSPECTED

Cafe Istanbul Bexley

was inspected by
Franklin County
Public Health



on 02/08/23

Visit www.myfcph.org to view the
inspection report or call (614) 525-3160



UNIVERSAL RECYCLING
Proud Participant

BEXLEY RECYCLING



Our Gift to the Future

CURBSIDE RECYCLING SERVICE IN BEXLEY



THIS CONTAINER IS FOR
RECYCLING


UNIVERSAL RECYCLING
Proud Participant

U0985052


Recycling
www.universalrecycling.com



THIS CONTAINER IS FOR
RECYCLING


UNIVERSAL RECYCLING
Proud Participant

U0985052


Recycling
www.universalrecycling.com



established 1999

LOCAL WASTE SERVICES

614 409 9375 / 740 756 7156
localwasteservices.com

Recycling Only

4-2205

DO NOT PARK
NO HAZARDOUS WASTE ACCEPTED

CAUTION **CAUTION**

NO PUBLIC DUMPING \$500.00 FINE



Recycling
www.bexley.org/recycle



100865100



Recycling
www.bexley.org/recycle



100865100



Recycling

www.bexley.org/recycle

TOTEK

100865100

RECYCLING

City of Bexley / Fall-Winter, 2025

LEAVES

 Beginning mid-October

 Curbside

Crews will collect leaves left on the tree lawn. Please do not leave sticks, grass clippings, or other yard waste in these piles and do not place leaves in the street. This program is weather dependent and will end after three full collection cycles.

PILLS/BOTTLES

 Oct. 25 10 a.m.-2 p.m.

 559 N. Cassingham

As part of DEA Takeback Day, Bexley PD will collect prescription and over the counter tablets, capsules, softgels, and other types of pills in the Police Department front lobby.

Liquid products, syringes, sharps,

PUMPKINS

 Mondays, November 6,
and December 4

 Curbside

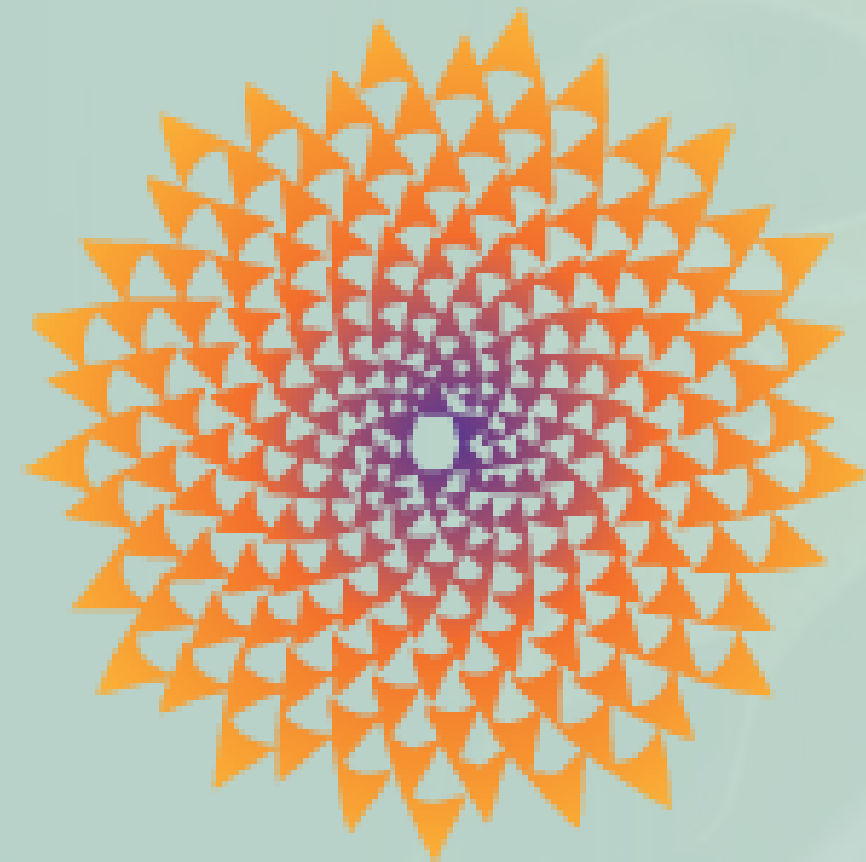
Earth Peak Organics will pick up pumpkins from residents who participate in the food waste recycling program on Mondays, as well as November 6 and December 4.

Jerry
• Furniture
• Electric

•• LABOR RATES ••

1. REGULAR \$24.50
2. IF YOU WAIT \$30.00
3. IF YOU WATCH \$35.00
4. IF YOU HELP \$50.00
5. IF YOU LAUGH \$75.00

*This song was used in
Resource Revolution,
a theatrical production at Teva.*



TEVA
POWERED BY ADAMAH



**reduce, reuse, recycle, rethink
because there's no such place as away**

No Such Place As Away

**There's no such thing as garbage that's what Mother Earth say
The leaves when they be fallin' they come back a new way
If everything we use could be good for the land
Then we'd keep it in the cycle again and again**

**If we reduce, reuse, recycle, rethink
Because there's no such place as away
If we reduce, reuse, recycle, rethink
Because there's no such place as away**

No Such Place As Away

**Buying plastic bottled water is a big fat waste
You can get it from the sink it's got the same great taste
Gather all your friends and make the right choice
'Cause when we unite the people the whole world will hear our
voice**

**When we reduce, reuse, recycle, rethink
Because there's no such place as away
When we reduce, reuse, recycle, rethink
Because there's no such place as away**

No Such Place As Away

**Don't let people on commercials always tell you what to do
Hey you need this, hey you need that
And buy it new, new, new
You got the power to think for yourself
It's time to get creative, wasteful habits on the shelf**

**You can reduce, reuse, recycle, rethink
Because there's no such place as away
You can reduce, reuse, recycle, rethink
Because there's no such place as away**

No Such Place As Away

**If we rethink what we're using we could save a lot of stuff
We're taking too much from the earth and its getting kinda rough
Open your mind, come on let me hear you say
What you did yesterday you don't have to do today.
What you did yesterday you don't have to do today.
What you did yesterday you don't have to do today.**

**You can reduce, reuse, recycle, rethink
Because there's no such place as away
You can reduce, reuse, recycle, rethink
Because there's no such place as away**



City of Bexley

Thank you!

eelman@bexley.org

bexley.org/sustainability | greenbexley.org

 **GREEN:BEXLEY**

Zero Waste DC

Department of Public Works | Office of Waste Diversion
Sarah Hofman-Graham



Stay in the loop by
following @dczerowaste



WE ARE WASHINGTON
GOVERNMENT OF THE
DISTRICT OF COLUMBIA
DC MURIEL BOWSER, MAYOR

Introductions



Sarah Hofman-Graham

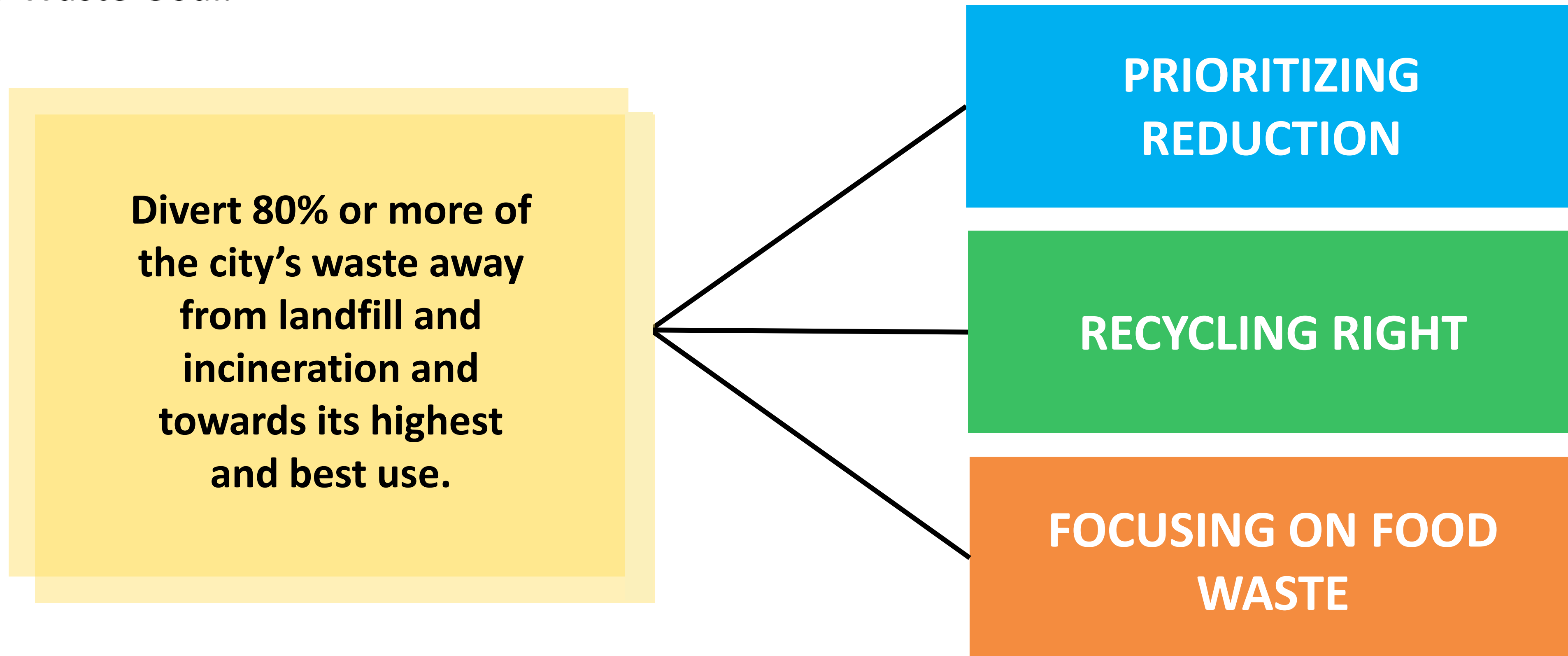
Management and Program Analyst

Office of Waste Diversion

D.C. Department of Public Works

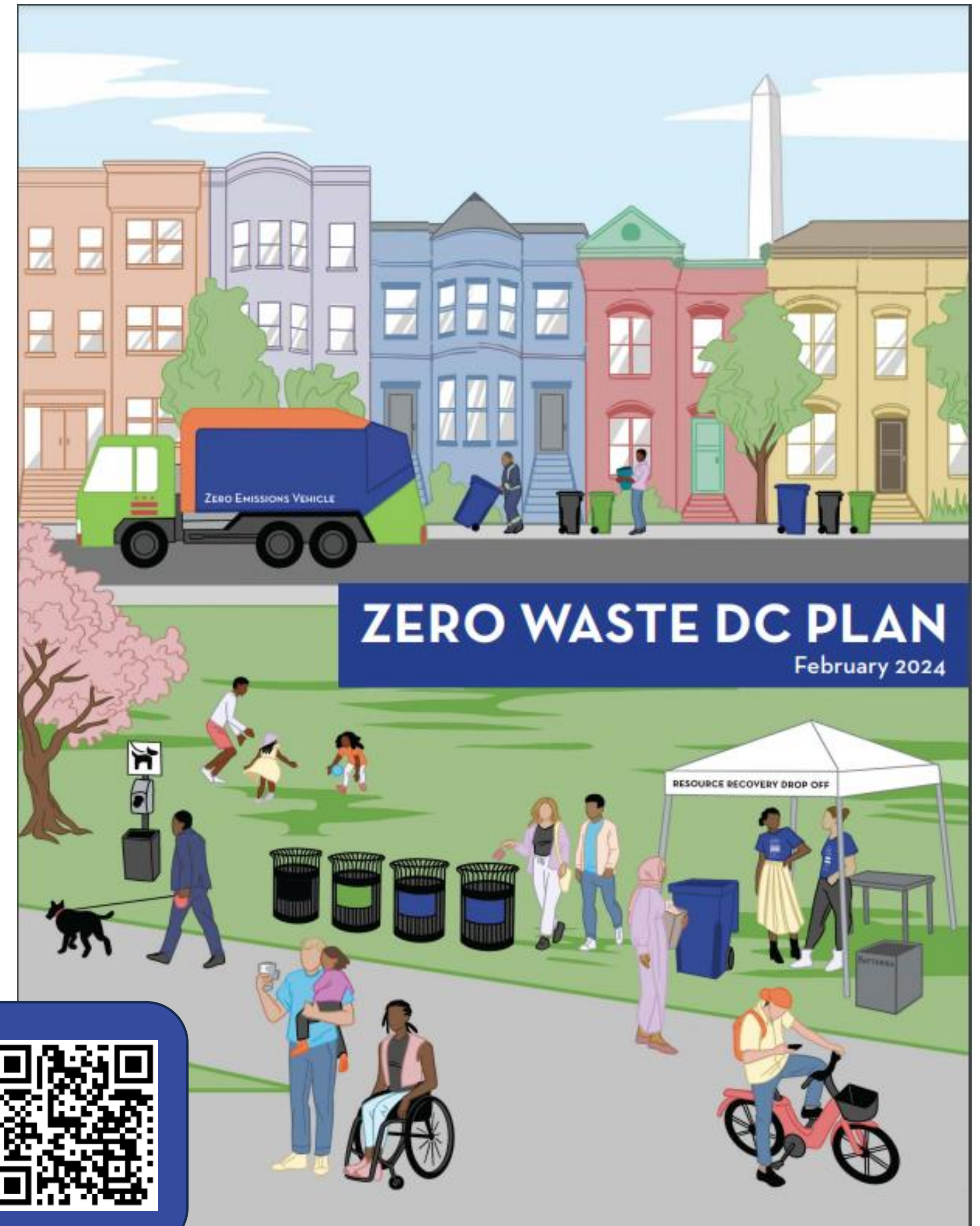
Mission and Work Streams

DPW's Office of Waste Diversion was established in 2014 to implement programs towards the District's Zero Waste Goal.



Zero Waste DC Plan

- The Zero Waste DC Plan provides a roadmap of steps the District must take to achieve an 80% waste diversion rate.
- The Zero Waste DC Plan is made up of 7 overarching goals and 43 actions designed to work together to achieve zero waste
- Development included:
 - Background research and baselining
 - Benefit-Cost Analysis
 - Public Engagement Process



Read the full
plan at:
[www.zerowaste.
dc.gov/zwdcplan](http://www.zerowaste.dc.gov/zwdcplan)



Zero Waste DC Impact

By 2040, if implemented fully, the Plan will:

- Divert an estimated 958,442 tons of solid waste annually.
- **Avoid an estimated 1.38 million MTCO₂e of GHG annually.**
- Create nearly 300 green jobs within the District Government and inject \$67 million in financial assistance and incentives into the community

This is the equivalent of planting 22.9 million trees and growing them for 10 years.



PRIORITIZE REDUCTION

Overview

- Reducing the waste generated citywide—from businesses, offices, schools, and homes—is the most impactful zero waste action.
- By targeting waste at the source, we can reduce carbon and air emissions not only from hauling and disposal, but across products' lifecycles.



PRIORITIZE REDUCTION

Existing DC policies and programs



Styrofoam food service ware ban



Central reuse directory, reuse.dc.gov



Ban on single-use plastic straws



5¢ plastic bag fees



Monthly repair clinics



Disposable utensils by request only

PRIORITIZE REDUCTION

In the Zero Waste DC Plan

1 REDUCE PER CAPITA WASTE GENERATION

- Plan for and track sustainable waste management.
- Require private sector reporting of solid waste data.
- Increase diversion in DC operations & procurement.
- Study and pilot save-as-you-throw billing structure for trash, recycling, and compost.
- Update construction code for circular deconstruction.
- Require permitted events to prioritize diversion.

2 TRANSITION FROM SINGLE-USE TOWARDS RE-USE

- Increase publicly available hydration stations.
- Implement refill and reuse policies citywide.
- Reduce single-use plastics at District businesses.
- Require reusable or compostable food serviceware.
- Adopt policies to phase out plastics polluting rivers.
- Restrict the use of certain single-use plastics.
- Phase out the use of certain single-use materials.

Incremental approach to reducing single use plastic



PRIORITIZE REDUCTION

What's next?

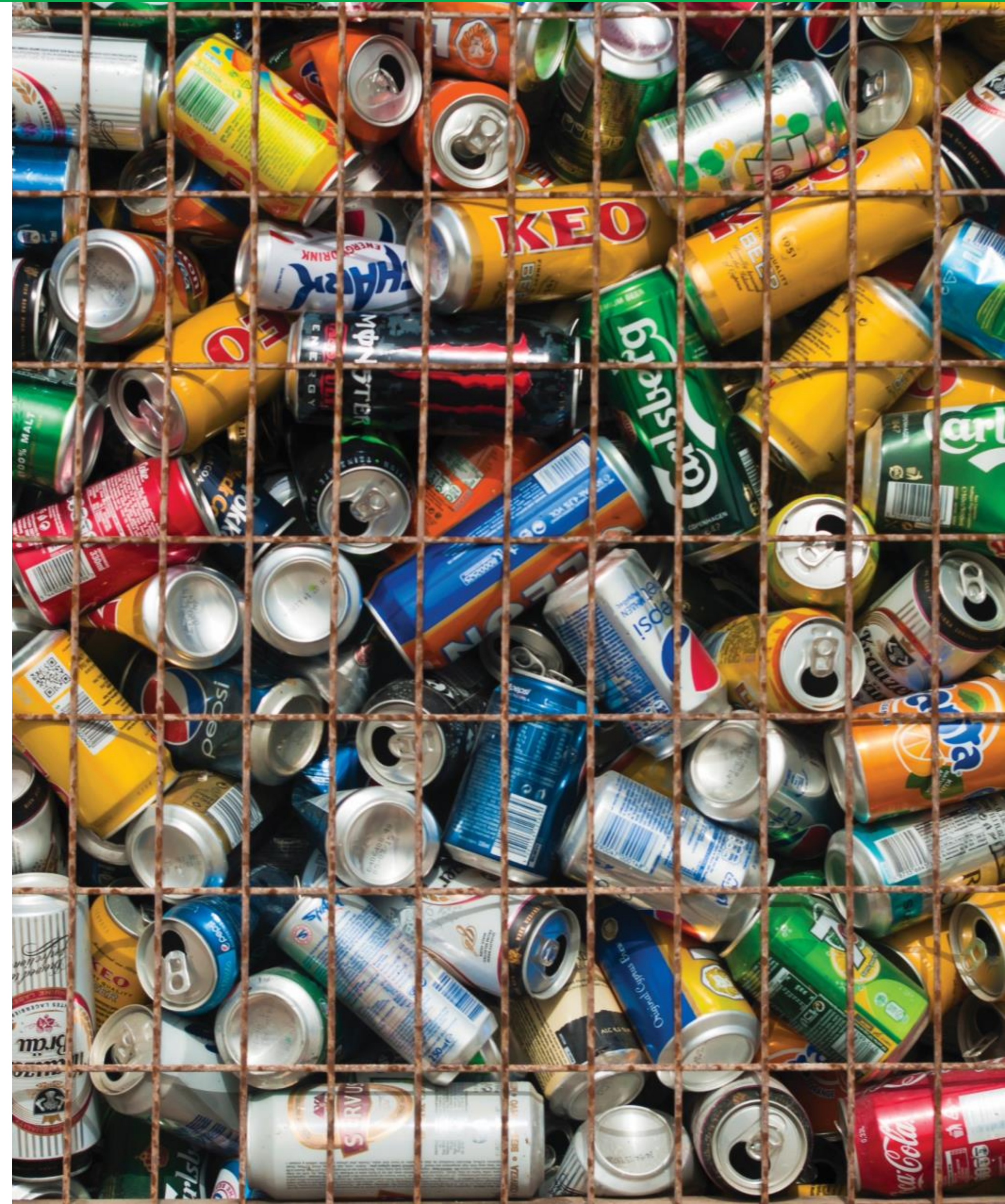
- Plastic Bag Fee assessment
- Continue to encourage voluntary use of reusables
- Groundwork to enabling reusables policies



RECYCLING RIGHT

Overview

- 2021 waste characterization study estimated that in DC between 20-30% of the waste stream are recyclable items.
- Multi-family and commercial sectors generally have lower recycling rates than residential sector.



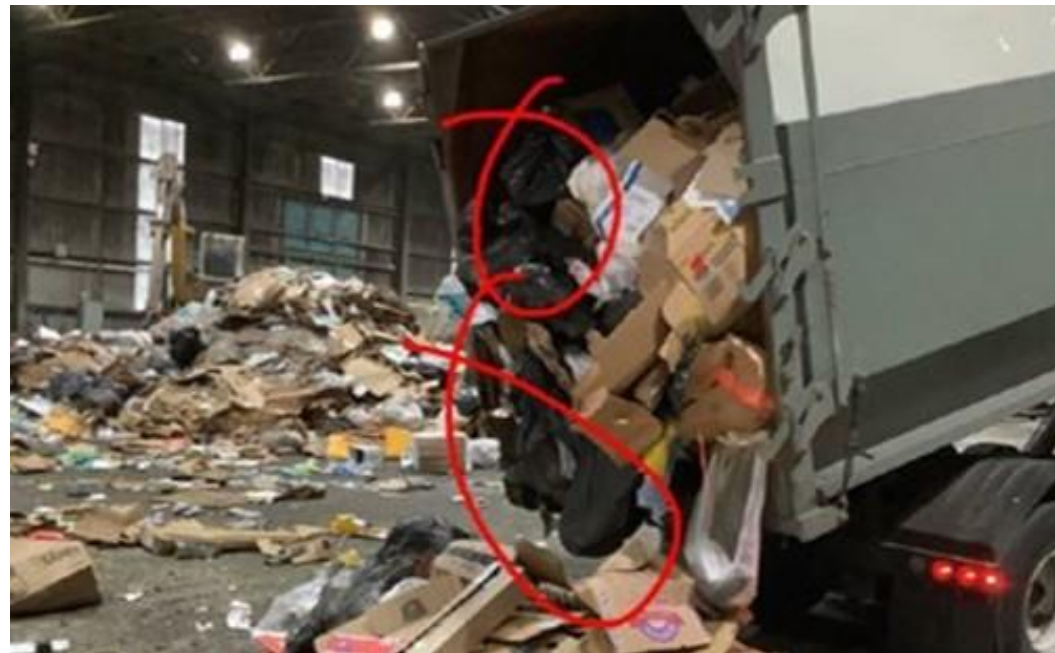
RECYCLING RIGHT

Existing DC Programs to Boost Recycling



Multi-Family Outreach and Assistance

Recycling Outreach Specialists proactively visit multi-family buildings to assess compliance with recycling requirements and offer technical assistance.



Recycling Contamination Screening

DPW staff screen loads of incoming recycling at the Fort Totten Transfer Station to keep trash out of recycling.



Community Education

DPW regularly attends community events to share information about recycling requirements and resources

FOCUS ON FOOD WASTE & ORGANICS

Overview

In the United States, food waste comprises **24%** of municipal solid waste in landfills

In DC, food waste makes up **18%** of the residential trash stream and **18%** of the commercial trash stream

Wasted food is responsible for **60%** of citywide emissions from waste when sent to a landfill or incinerator



Sources:

US EPA, Quantifying Methane Emissions from Landfilled Food Waste
2021 Waste Characterization Study (2018 Data)

Carbon Free DC

FOCUS ON FOOD WASTE & ORGANICS

Existing DC policies and programs

DPW-Managed Programs

Residential
Collection



Weekly
Drop-Off Events



24/7
Smart Bins



DPR Community Composting
Cooperatives



DPW's Food Waste Diversion Programs



Residential Collection Program

- Weekly curbside collection from DPW-serviced households
- 9,000 participating households across all 8 wards
- Collects ~85 tons per month



Collections Waitlist



Weekend Drop-Off Events

- 12 events every weekend year-round
- Co-located with farmers markets or other community hub
- Collects ~29 tons per month



Food Waste Smart Bins

- 31 bins citywide (new in 2025)
- 24/7 availability in all 8 wards
- Bins are unlocked via metroKEY app or keypad code
- Collects ~28 tons per month



Find a Drop-Off



FOCUS ON FOOD WASTE & ORGANICS

What's next?

- Adding 20 more food waste smart bins across the District for increased accessibility
- Expansion of residential food waste collection by 3,000 households
- Commercial food waste requirements



Zero Waste Infrastructure

What's next?

- Building a new “Zero Waste Transfer Station” on the site of a solid waste transfer station that burned down in 2021.
- Regional partnerships with private and public entities to increase organics processing capacity.



Thank you!

Learn more at zerowaste.dc.gov

Questions? Email us at zero.waste@dc.gov

Sarah Hofman-Graham

Department of Public Works, Office of Waste Diversion

Sarah.hofman-graham@dc.gov

An aerial photograph of a mountain valley. The foreground shows rolling green hills with scattered evergreen trees. In the middle ground, a small town or village is visible, nestled in a valley. The background features more distant, hazy mountain ranges under a clear sky. The entire image has a blue color overlay.

ZERO BY FIFTY MISSOULA, MT

Leigh Ratterman, Community Resilience Specialist

The City of Missoula adopted the "ZERO by FIFTY" plan in 2018 to achieve the goal of zero waste by the year 2050. This is a comprehensive plan that outlines a pathway to zero waste through increased access, infrastructure, education, and policy changes, and it applies to residents, businesses, and the university



Missoula has the collection system infrastructure in place so that all Missoulians can/could compost, recycle, divert C&D

Household Hazardous waste collection site was opened in 2023

Municipally-owned compost facility that accepts all compostable materials

Many large events have committed to working towards zero waste: Missoula County Fair, Roots Fest, Missoula Marathon, Pride Fest, Concerts at Griz Stadium, Griz Stadium games

Zero waste in K-12 schools

Home ReSource's Pledge Zero program supports businesses transitioning to zero waste

Missoula has a fairly comprehensive food recovery network

City-adopted Sustainable Building Policy and MRA deconstruction requirement

Successes

Challenges

Funding

Competing priorities

Lack of political will/support (local, state, federal)

State legislature

Capacity

Lack of incentives

Lack of community awareness



ZERO WASTE TASK FORCE

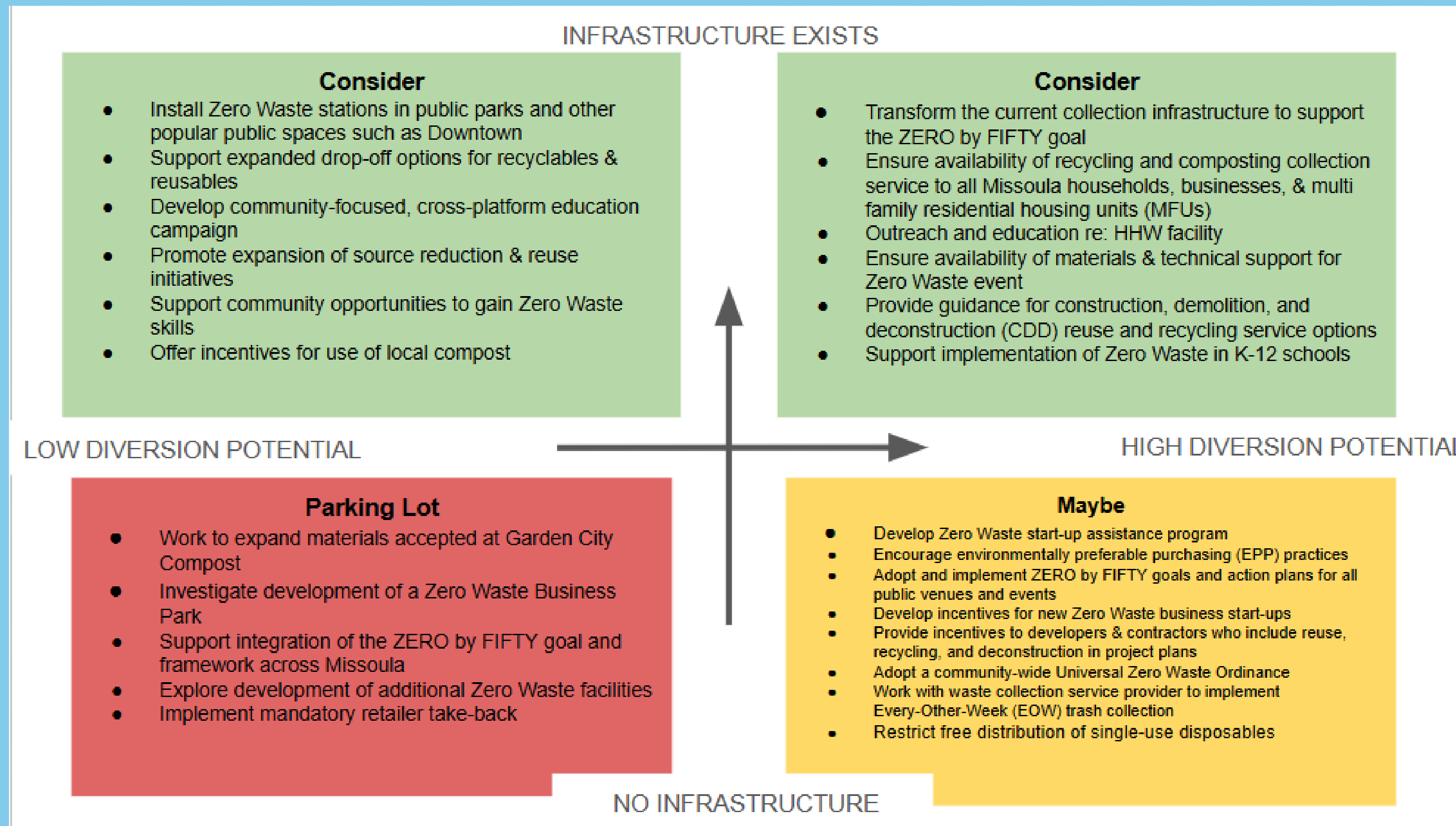
GOAL: CREATE A SHORT-TERM (3-5 YEAR) ROADMAP OF REALISTIC, IMPLEMENTABLE ZERO WASTE STRATEGIES FOR THE ZERO BY FIFTY PLAN



REVIEW CURRENT STRATEGIES, BARRIERS, SUCCESSES, AND DEGREE OF IMPLEMENTATION

1	A	B	C	D	E	F	G	H
2	Section	Action	Timeframe	Diversion Potential	Upstream Impacts	Successes Since 2018	Barriers to Implementation	Notes
3	A1.1:	Transform the current collection infrastructure to support the ZERO by FIFTY goal	Short	Medium-High	Low-Medium	We have compost collection, glass recycling services, recycling drop-off	Residents/businesses have to pay for diversion collection; no PAYT incentive structure; "recycling is extra" mentality, public education	
4	A1.2:	Ensure availability of recycling and composting collection service to all Missoula households, businesses, & multi family residential housing units (MFUs)	Short	Medium-High	Low	Now composting and recycling are available throughout Missoula. Home ReSource does C&D material collections at job sites.	Major obstacle for this service is equitable access. Recycling is an expensive add on to waste and materials management. Composting is also an added expense.	On-site mobile MRF are not available for C&D waste in Missoula. GCC-Availability there, no "reward" financially.
5	A1.3:	Support expansion of diversion options for household hazardous waste (HHW), e-waste, and universal waste disposal	Short	Low-Medium	Low	Home ReSource now host Household Chemical Collections and diverts chemicals to partners & for resale in store. HR accepts fluorescent light bulbs for recycling.	Cultural momentum of wasting; awareness of available programs; \$20 minimum HCC fee a barrier particularly in a "recycling is extra" culture w/out PAYT incentives. Appointments, expenses, limits for materials, capacity, etc. GCC-Education	There is not consistent reliable e-waste recycling; business take-back programs could be highlighted and promoted, e.g. Best Buy, Target - JD
6	A1.4:	Install Zero Waste stations in public parks and other popular public spaces such as Downtown	Short	Low	Low	GCC-Larger forums and City events are doing this which is a key start to the transitional mindset locally.	GCC-Funding, Community awareness/want, education	Lack of consistent, clear signage - JD.
7						Garden City now accepts household compost, food waste, compostable materials GCC- + wasted lumber, soil from small and lrg projects, helping local organizations taking in stuff that can't be	Capacity! – the materials list is comprehensive, but the big barrier is a lack of ability/willingness to expand input to take all of MSO's organics.	GCC- Can't take what will contaminate and can only take on so much per year due to growth in the last 9 years + community willingness.

CREATE DECISION-MAKING MATRIX



	Rating Based on Additional Criteria (cost, political will, capacity, measurability, culture change potential, timeline) 1 = low feasibility, 5= high feasibility									
Theme:	Kelli	Leigh	Jeremy	Derek	Becky	Sean/Elisabeth	Emi	Kelsie	Sarah	Jason D.
Transform the current collection infrastructure to support the ZERO by FIFTY goal	3	3	5	3		3				
Ensure availability of recycling and composting collection service to all Missoula households, businesses, & multi family residential housing units (MFUs)	4	4	5	4		4				
Outreach and education re: HHW facility	5	5	5	4		5				
Ensure availability of materials & technical support for Zero Waste events	5	4		5		4				
Provide guidance for construction, demolition, and deconstruction (CDD) reuse and recycling service options	4	4		4		4				
Support implementation of Zero Waste in K-12 schools	5	4	5	5		5				
Encourage and provide incentives for homes, neighborhoods, schools, and businesses to compost food scraps and yard trimmings	2	2		3		2.5				
Develop & deploy outreach program & resources to support businesses moving toward Zero Waste	3	3		4		3				
Install Zero Waste stations in public parks and other popular public spaces such as Downtown	3.5	2		4		3				
Support expanded drop-off options for recyclables & reusables	4	4		3		3				
Develop community-focused, cross-platform education campaign	4	4	5	4		4				
Promote expansion of source reduction & reuse initiatives	2	2		2		4				

CONSIDER ADDITIONAL FEASIBILITY CRITERIA

Education

Create and implement an education program that highlights existence of and opportunities at HHW, as well as alternatives to hazardous materials

Increase outreach and education to contractors, homeowners, and other industry professionals. Use data collected from building permits to understand the percentage of projects currently using deconstruction and where materials are being diverted to, as educational tool.

Create a technical support program for schools that have committed to zero waste, to ensure the programs continue year after year.

Create plug-and-play resources (how to guide, signage, etc) for businesses who are interested in going zero waste.

Create targeted community campaigns and ensure communication between all community partners to ensure participation in messaging; gather zero waste stakeholder group on a quarterly basis to provide updates and plan for shared zero waste education.

Expand reduce/reuse educational opportunities such as thrift store guide, fix it clinics, and other opportunities

Access

Complete a feasibility study (examining current structure and possible changes) to obtain options report on how to increase access to and participation in zero waste services, and work with decision-makers to gain support. The study may look at solutions such as municipal waste hauling contracts, incentive-based solutions, and policy recommendations.

Ensure public awareness around fix-it clinics, trainings, and other educational opportunities

Explore feasibility of increasing capacity to process community compost to help inform compost collection efforts

Create case studies to understand how schools/MFUs can impact diversion rates

Infrastructure

Expand current zero waste event services, design a program for smaller DIY events, and to provide various levels of technical and educational support (including all-inclusive technical support, as well as online training programs for DIY zero waste events)

Work with Parks Department and Downtown Association to build zero waste infrastructure in public areas (Out to Lunch, Downtown Tonight, Farmers Market)

Policy

Data collection policy

Next Steps:

- Finalize recommended short-term strategies that are realistic, and implementable in the next 3-5 years; goal is to identify ~10 strategies
- Create public-facing road map and gather feedback from the community
- Work with community partners to implement strategies

